



Select Ice Climbs in Rogaland & Sirdal

This is a photo diary record of routes climbed and/or photographed over a few seasons. There are many well-known routes not in here. Others without available info have been given names for the sake of personal logging. Most routes are listed in the isklatring section of the Klatring i Rogaland guidebook (pdf on *brv.no*).

Routes are listed approximately in order of driving distance from town (Stavanger), closest first.

Coordinates are taken from *Norgeskart.no* and show the start of the climbing on a route. Maps give an indication of location.

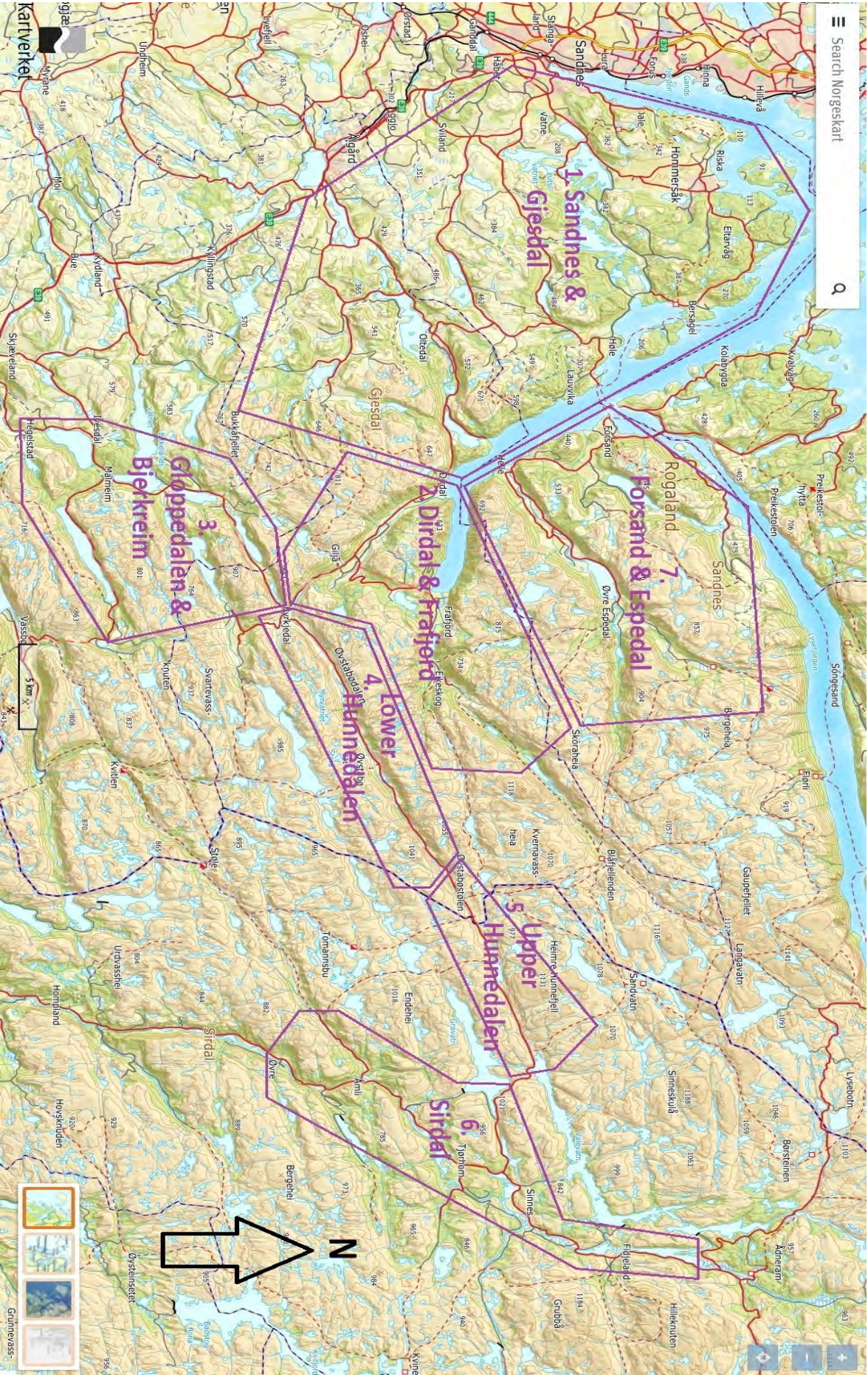
A suggestion for the descent is given.

Grades are subjective and based on the conditions on the day of ascent.

Richard Gaches

28.01.2021

REGIONAL MAP AND SUB-AREAS



1 SANDNES & GJESDAL AREA

Low altitude generally short routes close to town. Mørkaisen and Røyrbekken are higher and longer.



1.1 SANDNES

Krågedal-is WI3, 50m (58.84115N, 5.93096E)

Short friendly option in the farmland. Walk off to climbers right.



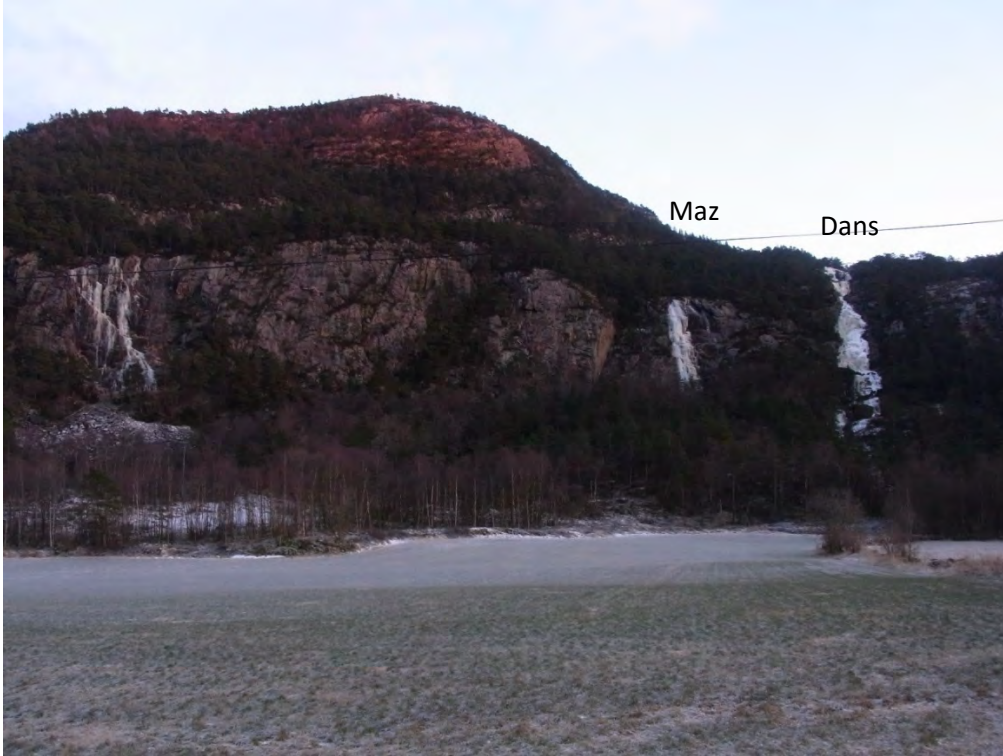
Svihus-is WI4, 80m, (58.81675N, 5.93518E)

Often fragile ice on first pitch. Second pitch is easy mixed. Walk off to climbers right.



Mazurka WI4 50m, **Dansen** WI3 100m (58.89534N, 5.96138E)

Easy and very low altitude options close to the summer crag. Rap down the routes on trees.



Nevland-is WI3+, 45m (58.78215N 6.02284E)

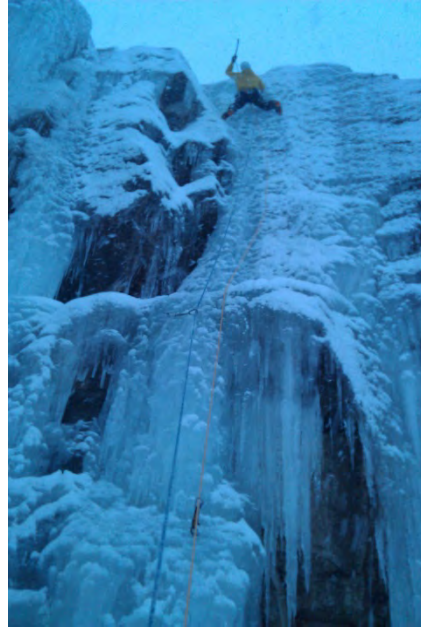
Thin slab and short pillar. Rap down off a tree.



1.2 GJESDAL / OLTEDAL

Oltesvik Quarry Various lines WI4 – 5, 20-80m (58.83836N, 6.12955E)

Low level cragging in a quarry. Usually thin ice. Might be affected by active quarrying from above!



Røyrbekken WI3, 250m, (58.83747N, 6.14212E)

Consistent route up a stream. Walk down the top half to climbers left then rap on abalakovs/trees.



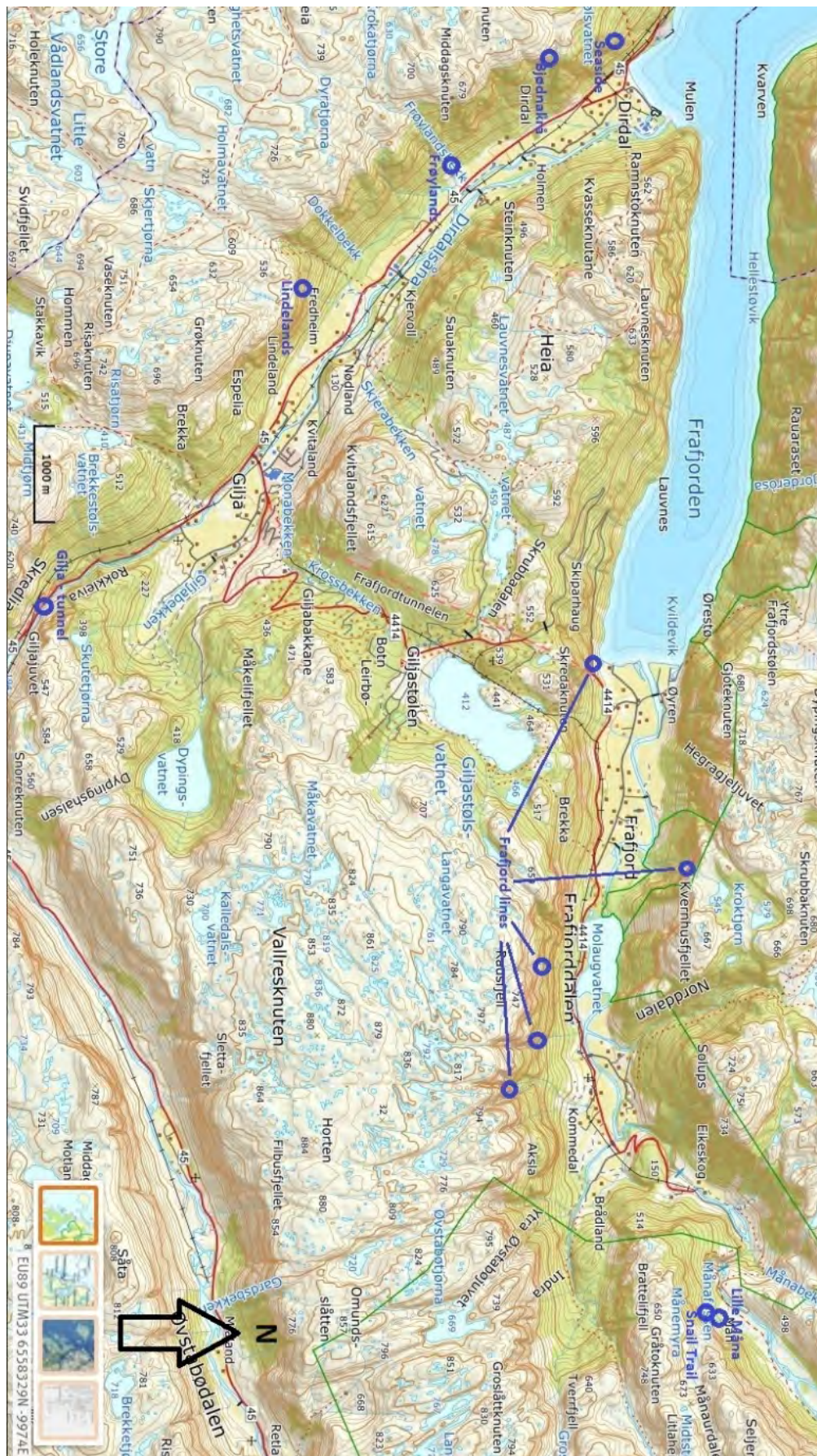
Mørkaisen WI4+, 120m, (58.8374N, 6.14208E)

A fine sustained route with few ledges. Not often fat. Rap down the route on abalakovs.



2 DIRDAL & FRAFJORD AREA

Low altitude but with some long, high quality lines. Generally a short season. Månadalen is higher altitude.



2.1 DIRDAL

Seaside Ice WI4, 180m, (58.83400N, 6.17224E)

The closest route to the sea in Dirdal. Rap off trees.



Bjødnakrå WI5+?, 100m (58.82254N, 6.18181E)

Sustained steepness with a rough approach.



Frøylandsbekken WI4, 300m, (58.81880N, 6.19657E)

Ca. 6 fine and varied pitches, not all visible from the road. Walk off to climbers left.





Lindelandsbekken WI4, 450m (58.80911N, 6.22337E)

Aesthetic long route at the end of Dirdal. Forms most years but rarely looks fat. Best with no snow. Walk off to climbers right passing below a pillar (Den Lange Anmarsjen, WI5).

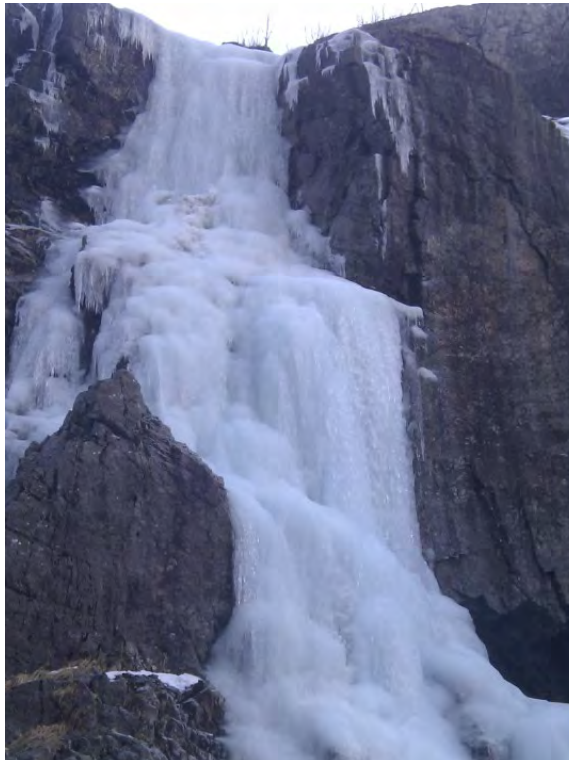




2.2 GILJAJUVET (TUNNEL ICE)

Various lines WI3-5, 30-60m, (58.78883N, 6.28186E)

Cragging venue with several single pitch and one 2-pitch line. Rap off trees.





2.3 FRAFJORD

Various lines WI4-5+, 200-500m
 Low altitude, needs a sustained freeze to sea level. Mega lines.





2.4 MÅNADALEN

Lille Månafossen WI3+, 180m, (58.85778N, 6.39477E)

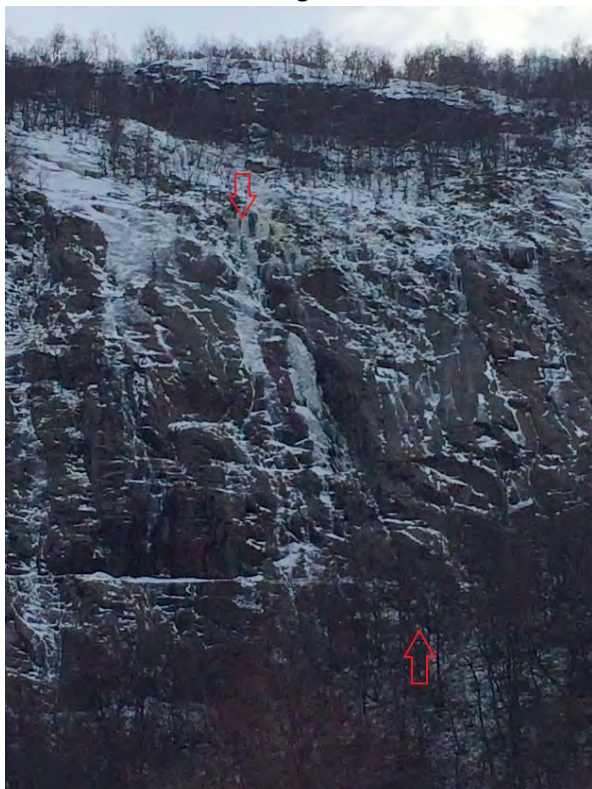
High quality moderate route, impressive when fat. Walk ca 300m to climbers right and rap from trees.





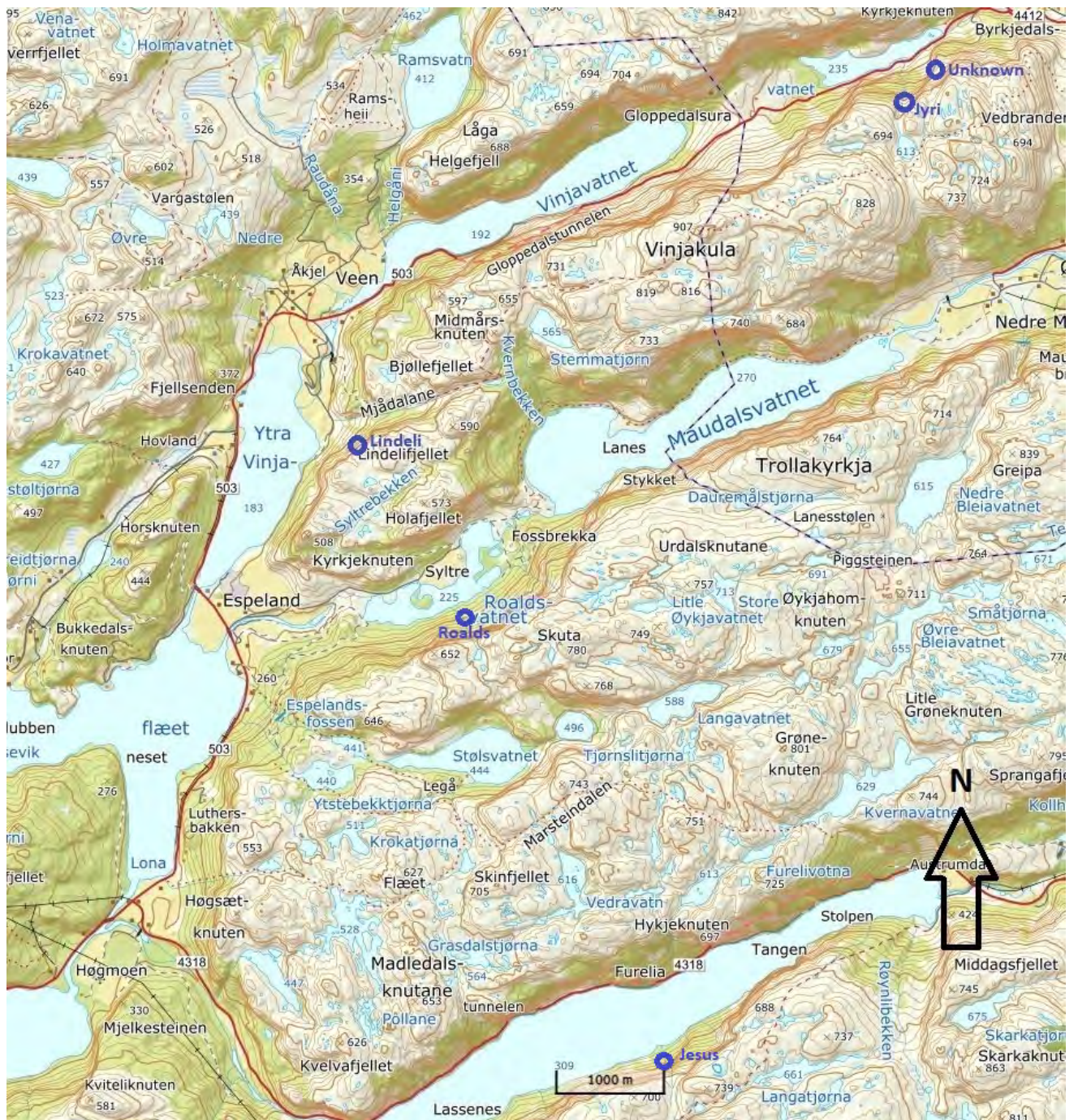
The Snail Trail WI3+ / M3, 80m (58.85694N 6.39349E)

A thin ice/mixed route right of Lille Månofossen. Walk climbers right and rap off trees



3 GLOPPEDALEN & BJERKREIM AREA

Relatively low altitude but more reliable than Dirdal. Many routes not described here.



3.1 GLOPPEDALEN

Jyritona WI3+, 180m (58.77309N, 6.30176E)

Hidden gully with three good pitches and walking in between. Walk / rap off trees to climbers right.



Knoll WI4+, 120m (58.77391N 6.30686E)

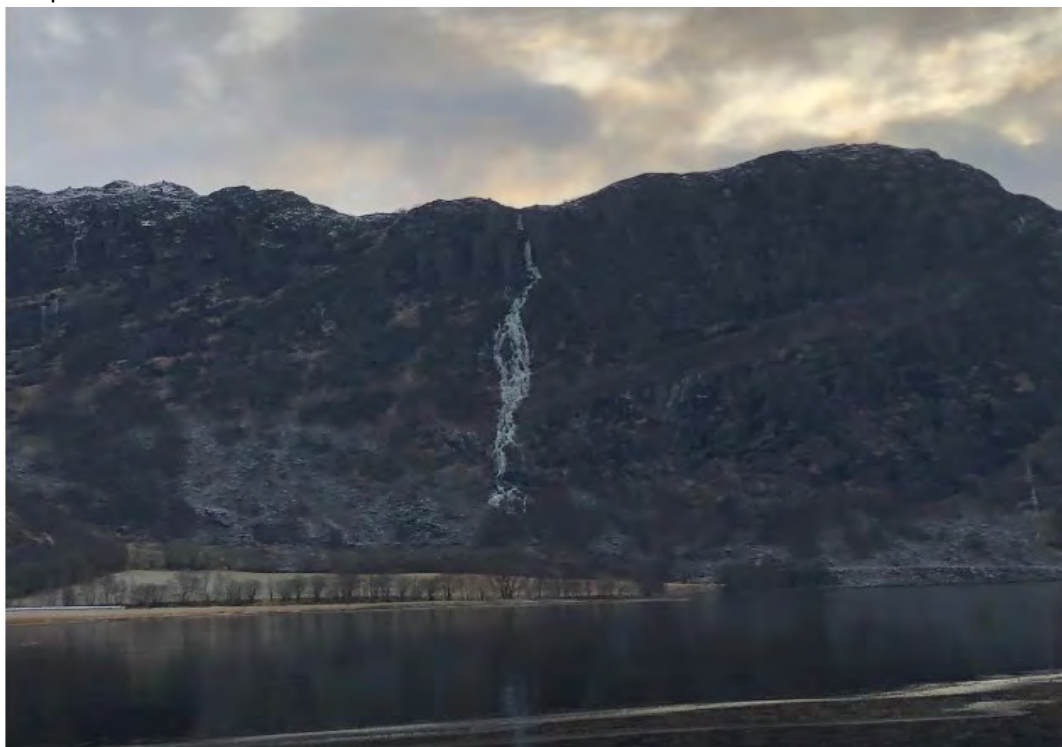
Easy p1, a steep curtain on p2, short p3 to top out. Rap from trees.



3.2 BJERKREIM

Lindelibekken WI5, 250m (58.73682N, 6.221801E)

Four pitches of easy climbing leads to a much steeper finish. Rock gear useful. Walk off climbers left down a steep ramp.





Sindrefossen, WI5, 200m (58.72359N, 6.24531E)

An impressive line with steep and sustained climbing. Can be very wet on the crux pitch. Much easier to approach when the lake is safely frozen. Rap off on abalakovs. The route was a project of Sindre Bø.







3.3 AUSTRUMDAL

Jesusbekken WI5, 180m (58.69018N, 6.28578E)

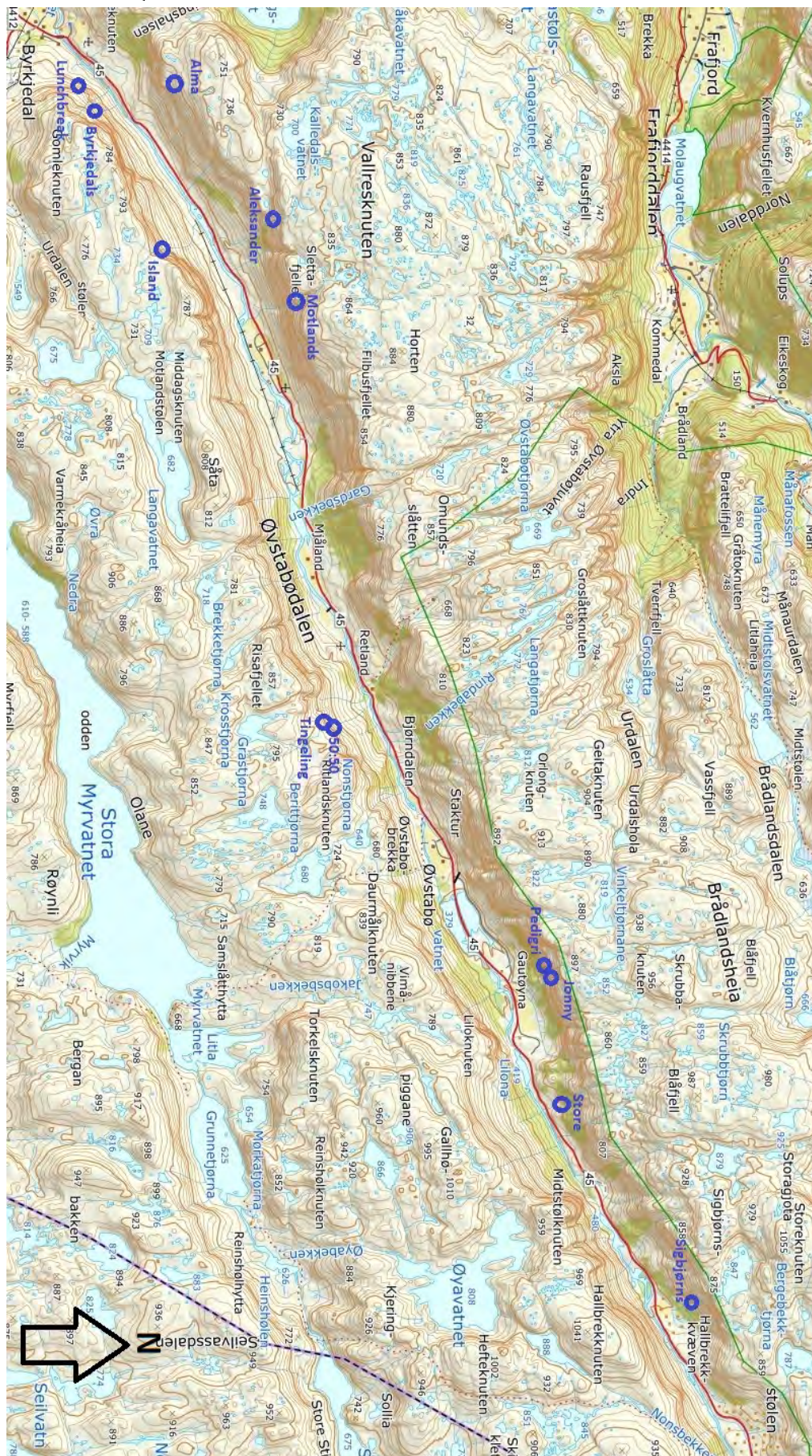
Named because you might need to walk on water to get to it (or use a paddleboard/kayak). Rap on abalakovs.





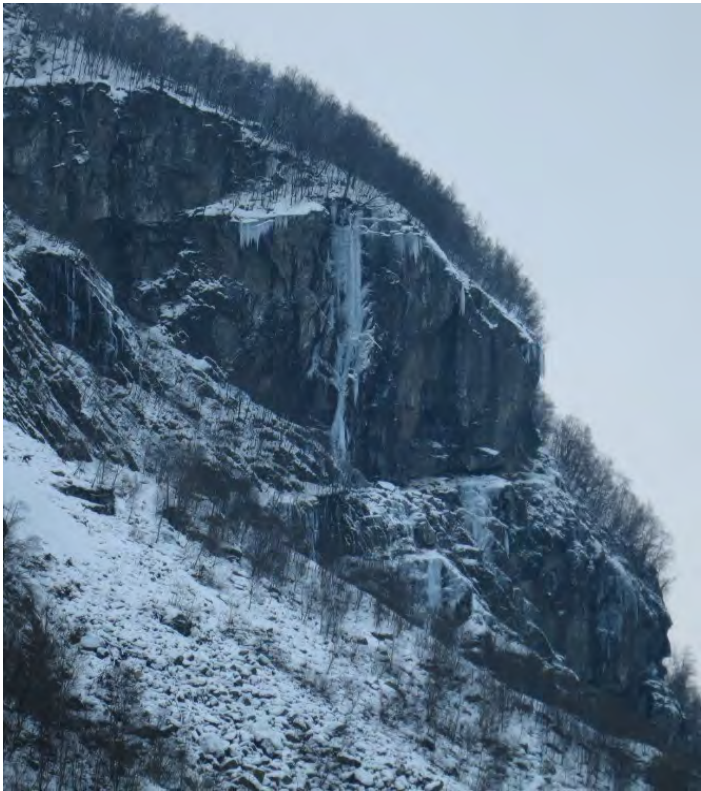
4 LOWER HUNNEDALEN AREA

Some of the best and longest routes in the area. Most will come into condition at some point during the season. Quite a few known routes not described here.



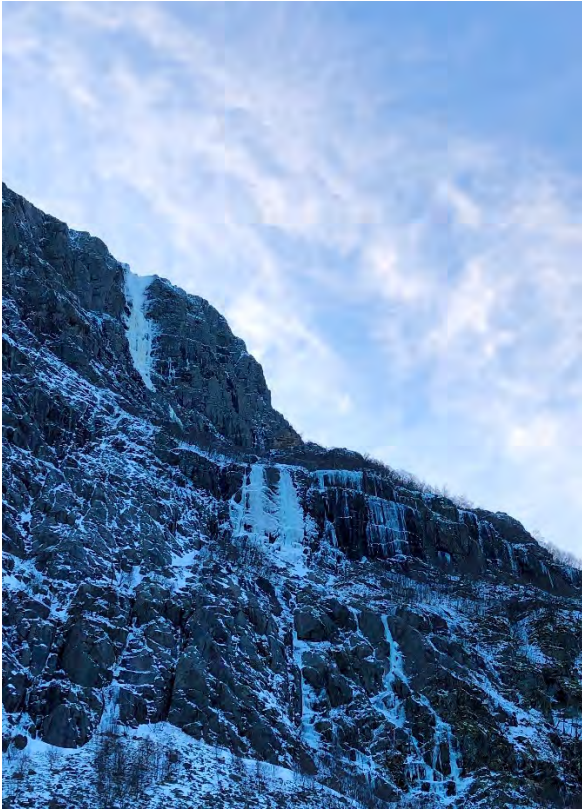
Lunchbreak WI5+, 90m (58.78726N, 6.333062E) (South side of the valley)

The first route on Hunnedalen's south side. A beautiful exposed top pitch. Rap down from trees.



Byrkjedalsfossen Direct WI5+, 350m (58.78751N, 6.33446E) (South side of the valley)

One of the most impressive lines in the region but hard to find in good condition from top to bottom. Ca. 8 pitches of climbing split into two tiers. Walk off the back and return via the road.





Almabekken WI3, 150m, (58.79393N, 6.33026E) (North side of the valley)
Often formed but catches the sun. Rap off trees climbers right.



Island WI4, 200m, (58.79248N, 6.34671E) (South side of the valley)
Reliable high quality ice in a deep gully. Rap off abalakovs down the route.





Aleksandersfossen WI3, 150m (58.80474N, 6.35213E) (North side of the valley)
 A wide easy flow. Walk off climbers left or rap off abalakovs down the route.



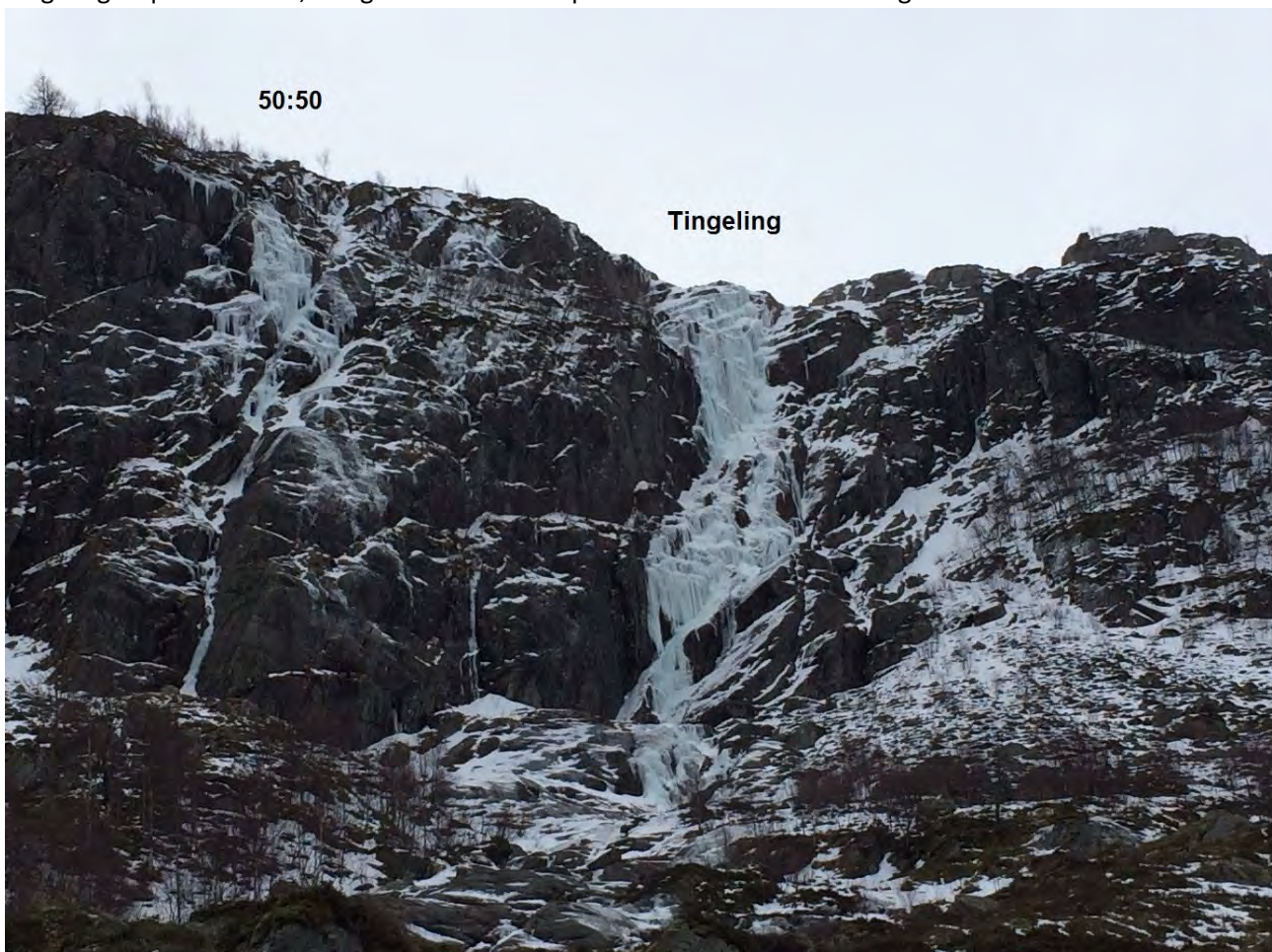
Motlandsisen WI4+ 350m (58.80627N, 6.36721E) (North side of the valley)

Long high quality gully. The best pitches are hidden from view. Rap down the route on abalakovs/trees.





Tingeling WI4+ 120m & **50:50** WI4 120m (58.81738N 6.44029E) (South side of the valley)
 Tingeling is quick to form, but gets buried in deep snow. Walk off climbers right both route



Tingeling



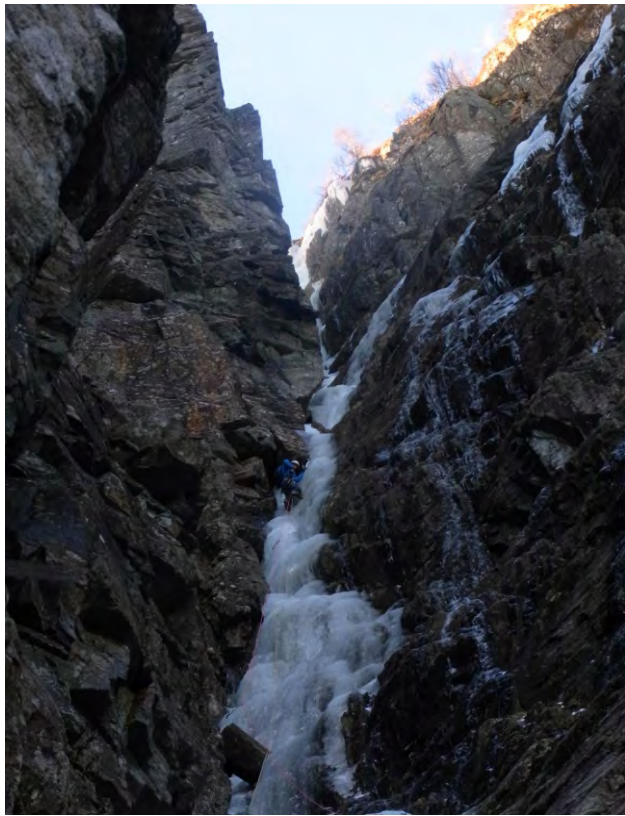
50:50



Pedigri Pål WI4+, 200m (58.83986N, 6.48021E) (North side of the valley)

High quality streak in the back of an atmospheric cleft. Rap down the route on abalakovs/trees.





Jonny go Home WI5 200m (58.83999N, 6.48039E) (North side of the valley)
The cave on p2 takes a while to build up enough ice



Storebekken W14 200m (58.8432N 6.5031E) (North side of the valley)

A load of easy rambling ice to some hidden steeper pitches. Walk / rap off trees climbers right.

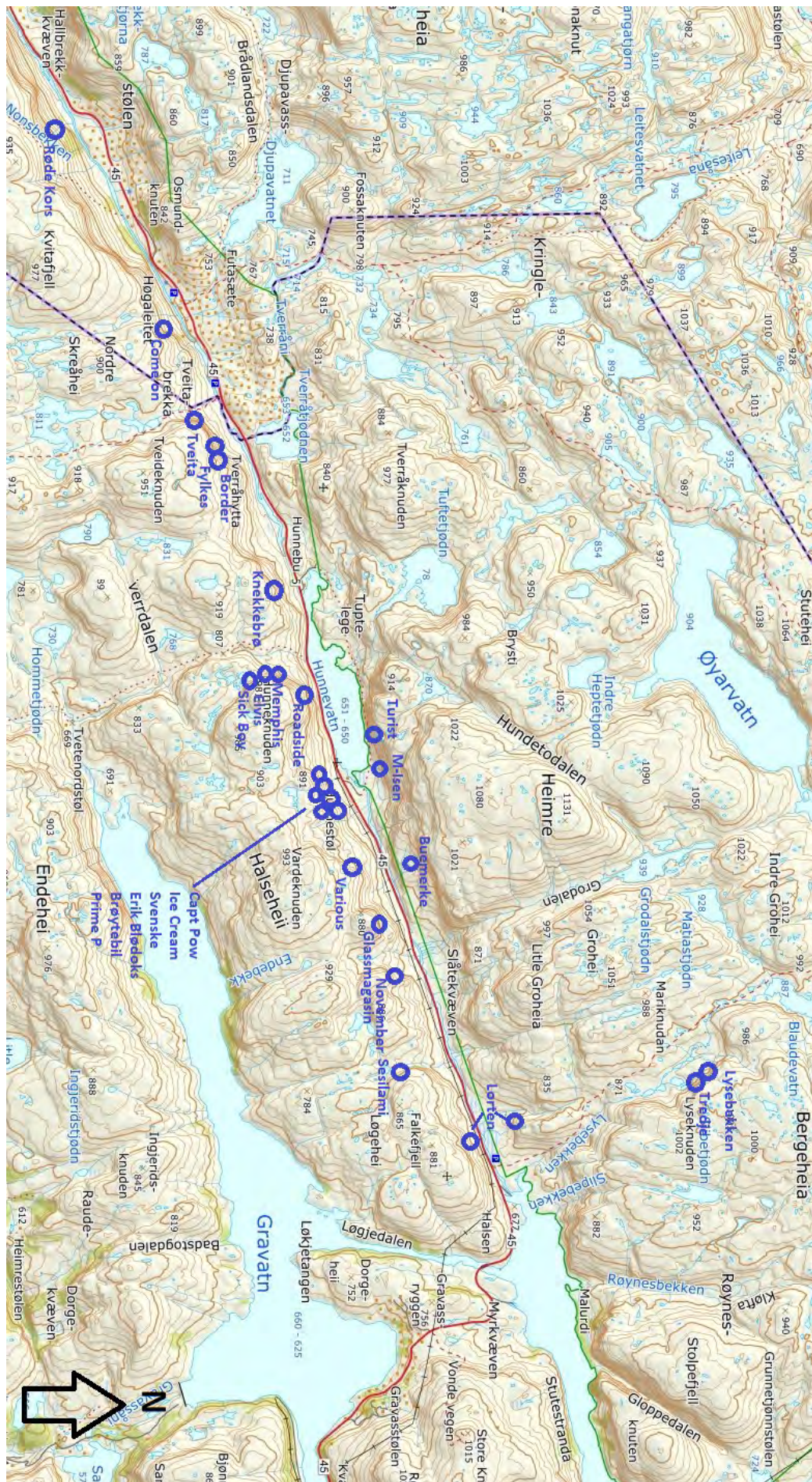


Sigbjørnsfossen WI3+ 150m (58.85804N, 6.53514E) (North side of the valley)

Reliable and high quality early season option. Gets buried with snow. Walk off down a ramp climbers right.



The prime area. High altitude, many routes and a relatively long season.



Røde Kors isen WI3+, 250m (58.8599N, 6.5579E) (South side of the valley)

Worthwhile if it's not buried. Can be high water flow under the ice. Walk off climbers left.



Come On Ice WI3 80m (58.8740N 6.5932E) (South side of the valley)

Easy, early season only. Rap off trees.

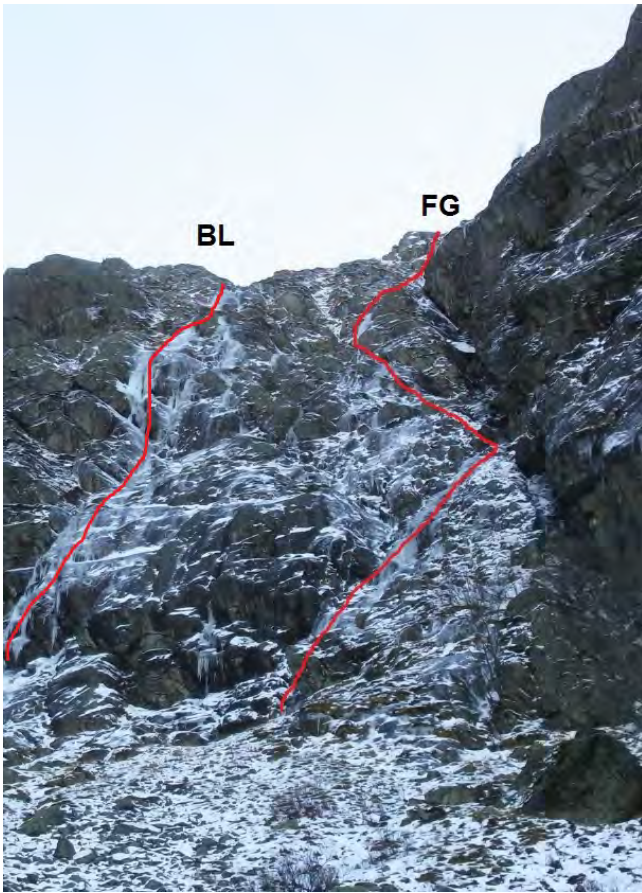


Tveitaisen WI4 180m (58.87644N 6.60558E) (South side of the valley)

Often thin and crappy ice on the slabs at the start. Walk off climbers right.



Borderline WI3+, 150m & **Fylkesgrense** WI3+, 150m (58.87819N, 6.61175E) (South side of the valley)
Early season options when there's little snow. Long walk off climbers right, or down the gully climbers left (beware avalanche conditions)



Knekkebrørenna WI4 / M4, 80m (58.8849N, 6.63305E) (South side of the valley)

Mixed gully climbing, with ice, snow and chockstones. Grade will vary greatly with snow depth. Walk off climbers left or rap down the route on abalokovs/rock gear

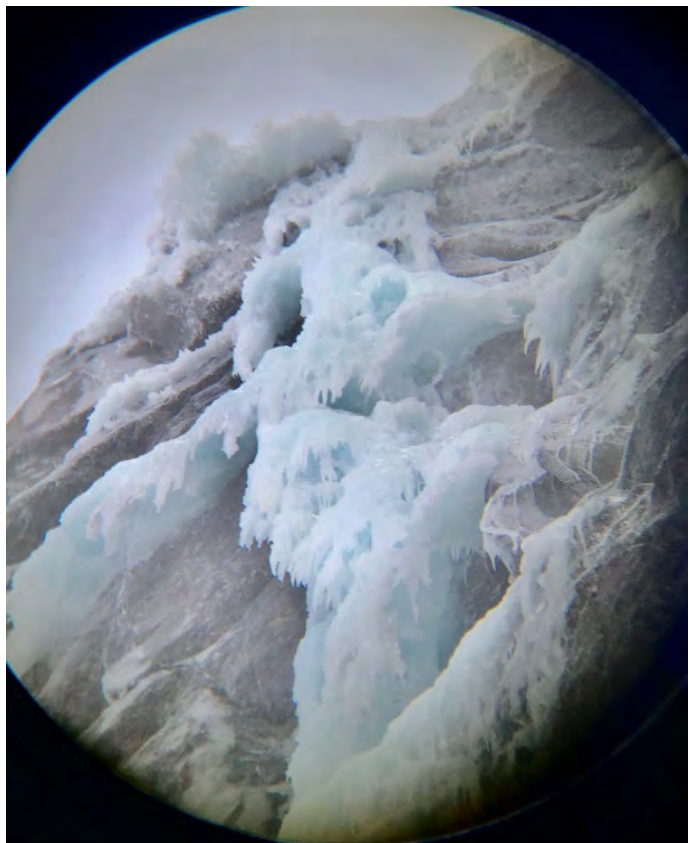


Memphis WI4+ (& Elvis WI4+), 100m, (58.88646N, 6.64940E) (South side of the valley)
Reliable high quality routes. Rap down routes on abalakovs, or a long walk climbers right.



Sick Boy WI5+/6, 120m (58.88545N, 6.64952E) (South side of the valley)

A wild and steep route; one of the hardest in Hunnedalen. A mixed start is possible up the gully if the ice doesn't reach the ground. Descend by walking south then a single rap where the cliff is lower.





Various lines WI3-WI4s, 60m (58.88555N 6.64932E) (South side of the valley)

Many cragging options in this area, some close to the road and others further in, beyond Elvis/Memphis. Rap off generally



Roadside Iceclimbers WI5+, 180m, (58.88937N, 6.65230E) (South side of the valley)

One of Hunnedalens best - two steep tiers with pillars. Walk off climbers left or rap on abalakovs.



Prime Pussey WI4+ 70m (58.89235N, 6.66948E) (South side of the valley)

Short freestanding pillar to start, not always touching down. Walk off climbers right.



Erik Blødoks WI4 80m (58.89235N, 6.66952E) (South side of the valley)
Two interesting pitches. Variations possible. Rap down from abalakovs/trees.



Brøytebilmannen WI4 80m (58.89235N, 6.66952E) (South side of the valley)

One of the most reliable routes in Hunnedalen a wide flow then a narrow chimney. Rap off trees climbers right.



Captain Powder WI4, Ice Cream Man WI4, Svenskerute WI4 50m (58.8930N 6.6711E) (South side)



Ice Cream Man



Svenskerute



Turistisen WI3+ 100m (58.89503N, 6.65784E) (North side of the valley)

Steepest on the first pitch, the rest gets buried in snow. Walk/rap off trees climbers right





M-Isen WI5 40m (58.896753N, 6.663215E) (North side of the valley)

Single pitch with some possibilities either side. Sun affected. Rap off trees or abalakovs.



Various Routes / Link Ups WI4 100m (58.8968N, 6.6783E) (South side of the valley)

Linking up of two tiers of cliffs with walking between can give some good pitches. Walk off climbers right.

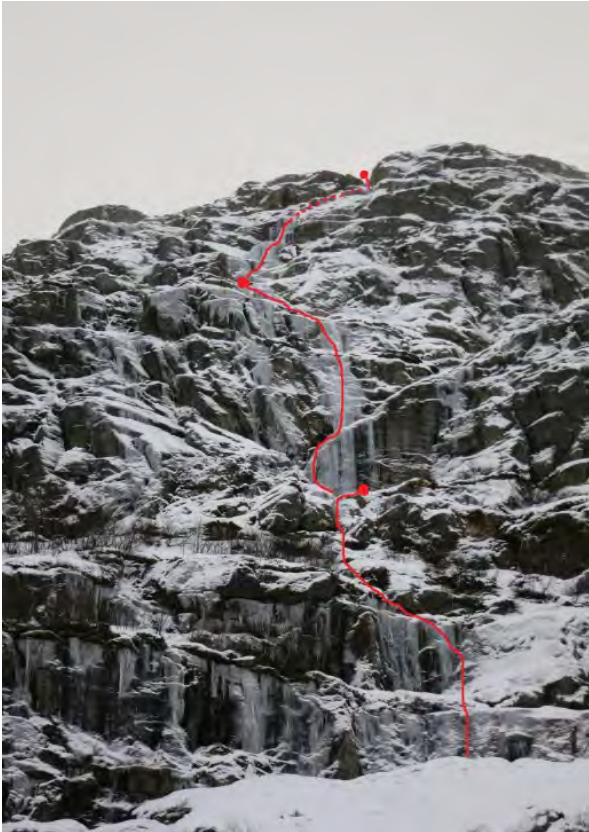


Buemerkeveggen various lines WI4-5, 25m (58.90132N, 6.68125E) (North side of the valley)
Short steep cragging options. Sun affected.





November-is WI3, 120m (58.8967N, 6.6877E) (South side of the valley)
 An early season option for the desperately keen. Walk off climbers right.



Glassmagasinet WI5 70m (58.89825N 6.69005E) (South side of the valley)



Sesilami WI5, 70m (58.90299N, 6.71430E) (South side of the valley)

An aesthetic bonded pillar. Rap down the route on abalakovs.



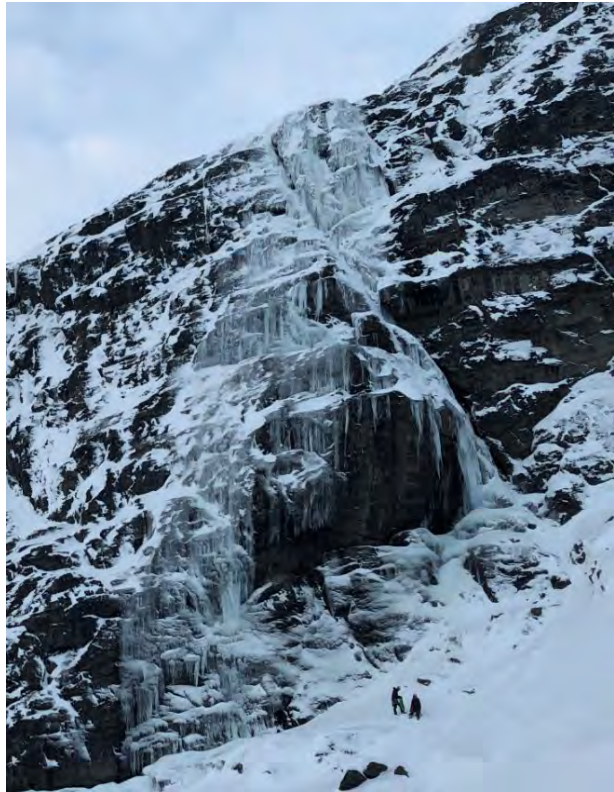
Various routes Lorten area, WI3-WI5, 20-50m (58.91026N 6.72724E) (Both sides of the valley)

Single pitch cragging options either side of the FV45 road.



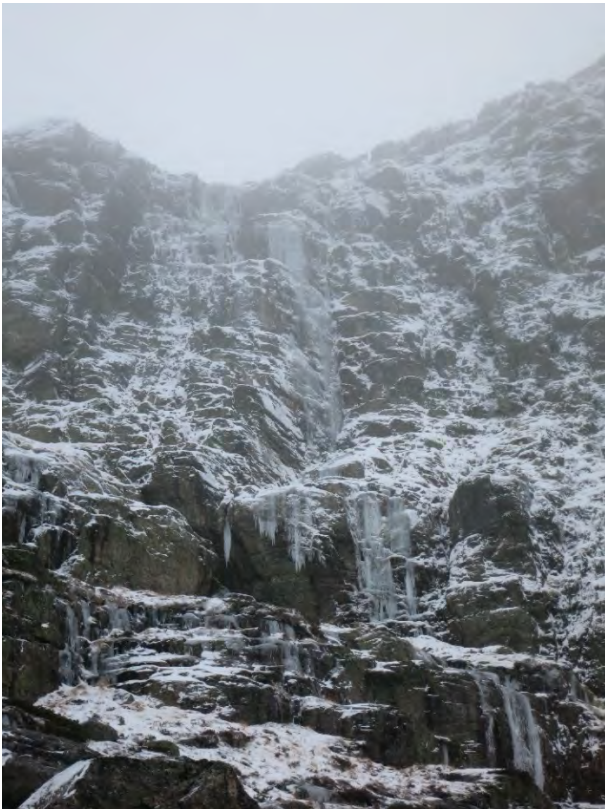
Lysebekken WI4 80m (58.9300N 6.70798E) (North side of the valley)

The highest route around and often the first to form. A steeper left hand start is sometimes possible. Faces south west - the sun destroys it quickly. Walk off climbers left or rap off boulders.



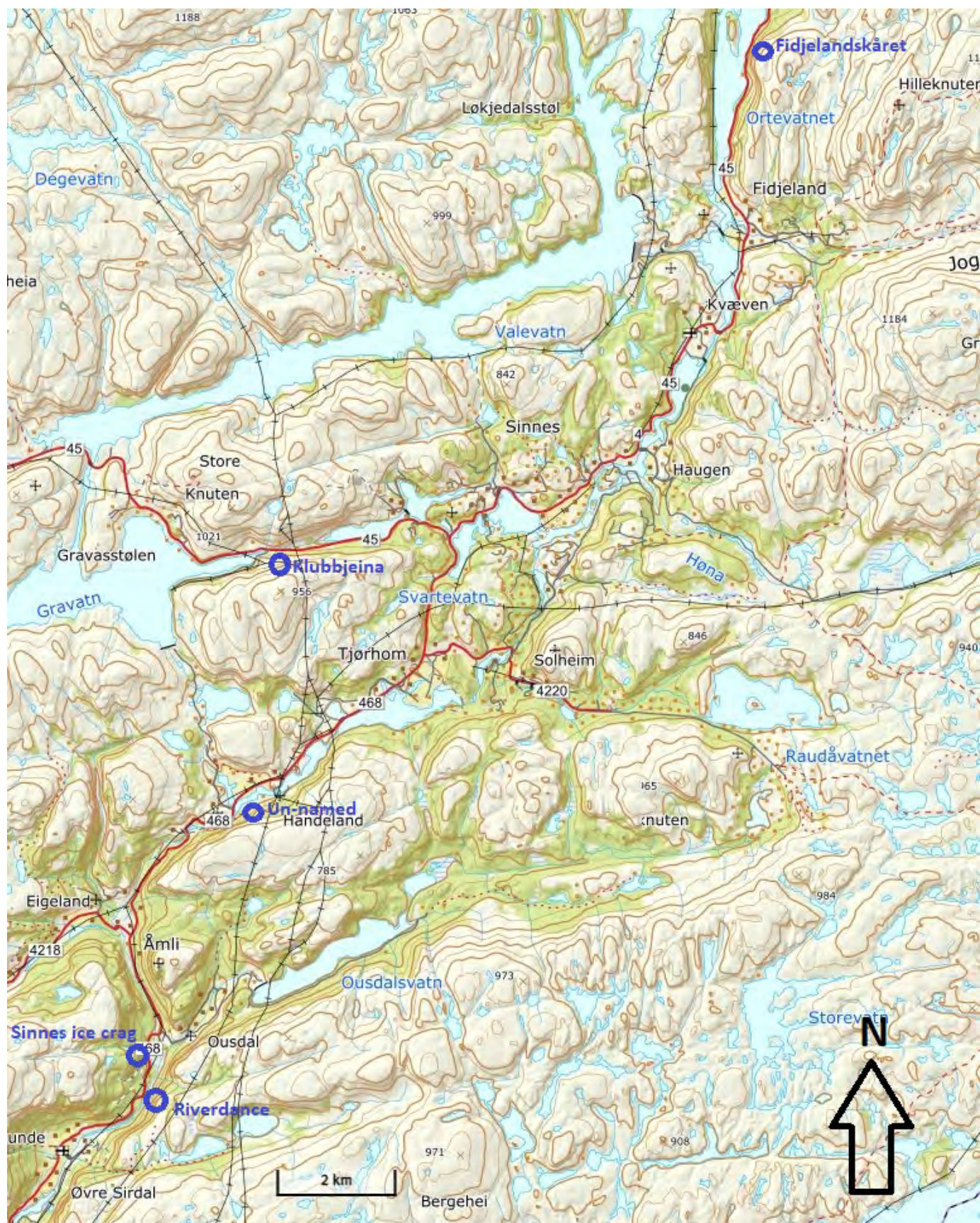


Tredje advent WI4+ 100m (58.92936N, 6.71029E) (North side of the valley)
A few hundred metres right of Lysebekken



6 SIRDAL AREA

Some interesting lines scattered along the skiing valley. Further south the altitude gets lower but the terrain gets bigger.



Klubbejeina WI3 80m (58.89864N 6.80212E)

Two nice pitches. Walk to climbers left and rap off trees



Fidjelandskåret, WI3+ 120m (58.988609N, 6.927111E)

Rap off trees to climbers left.





Unknown Sirdal WI4+ 100m (58.86181N, 6.80655E)

Two good pitches. Rap off trees / abalokovs.



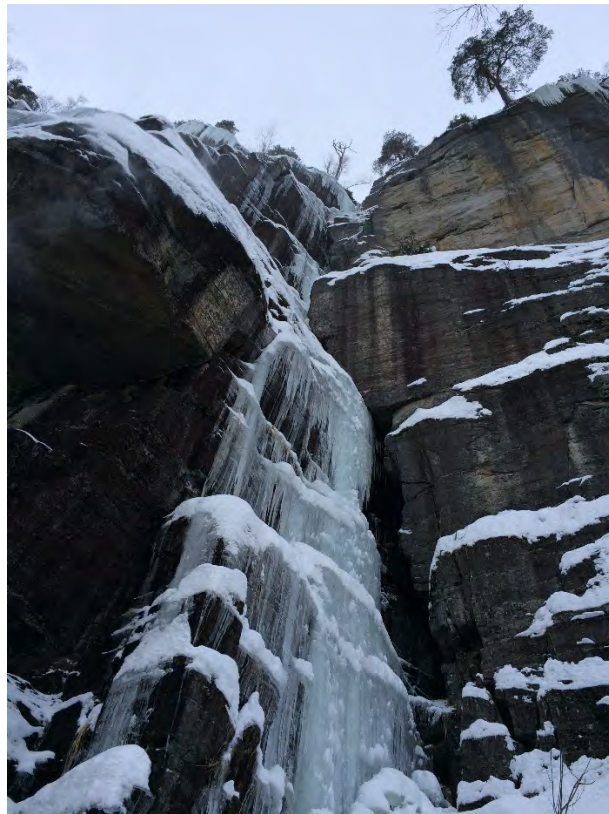
Sinnes Ice Crag – various lines WI4-5, 15-25m, (58.82533N, 6.78332E)

Fairly reliable steep single pitch cragging with many options. Plenty of trees for top roping.



Lunde Crag – various lines WI4-5, 50-100m (58.79699N, 6.74898E)

Many route options, some pure ice some mixed. Quite low altitude and sun affected.



Riverdance WI4, 250m (58.81793N, 6.78739E)

A quality line of yellow ice on the east side of the river (needs to be crossed to approach). Rap down on trees. The pic is taken in poor conditions.



7 FORSAND & ESPEDAL

Much to do over here, with some big lines, although the altitude is relatively low.



7.1 FORSAND

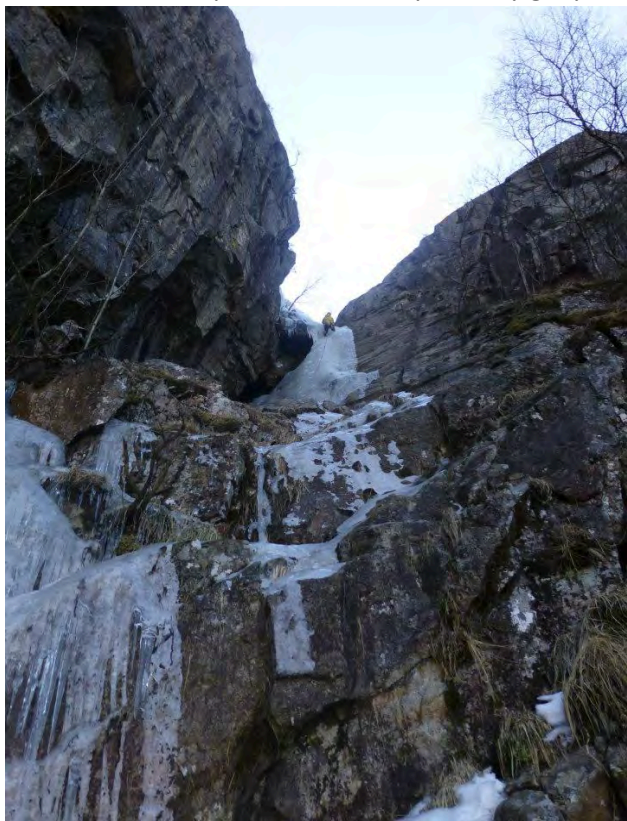
Unknown WI4, 140m, (58.89178N, 6.11813E)

Low level route seen from the ferry to Forsand. Needs a sustained freeze to sea level.



Too Fat to Fly WI4+, 140m (58.89178N, 6.11813E)

Thin slabs, then a pillar, followed by an easy gully. Walk / rap off trees to climbers right



Feeding the Rat, WI4 / M3, 70m, (58.89178N, 6.11813E)

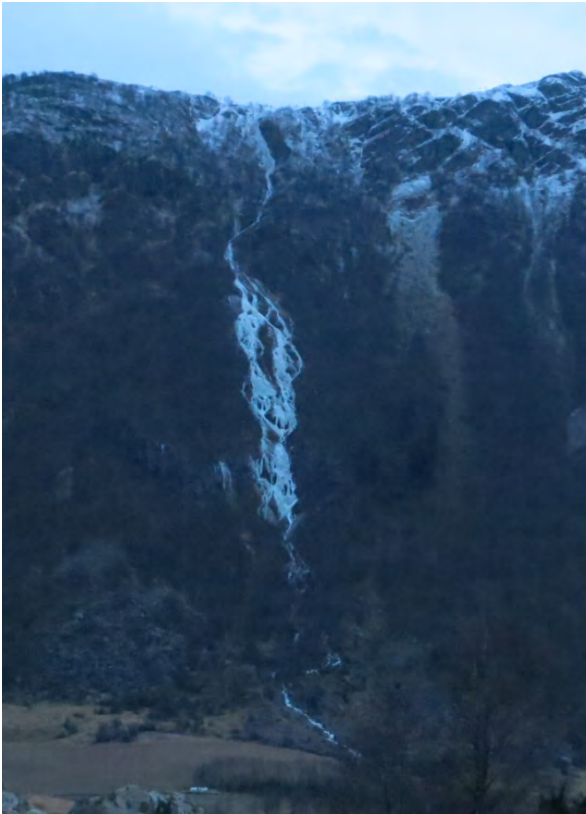
An aesthetic narrow ice streak with a mixed start. Walk / rap off trees climbers right.



7.2 ØVRE ESPEDAL / VINDDALEN

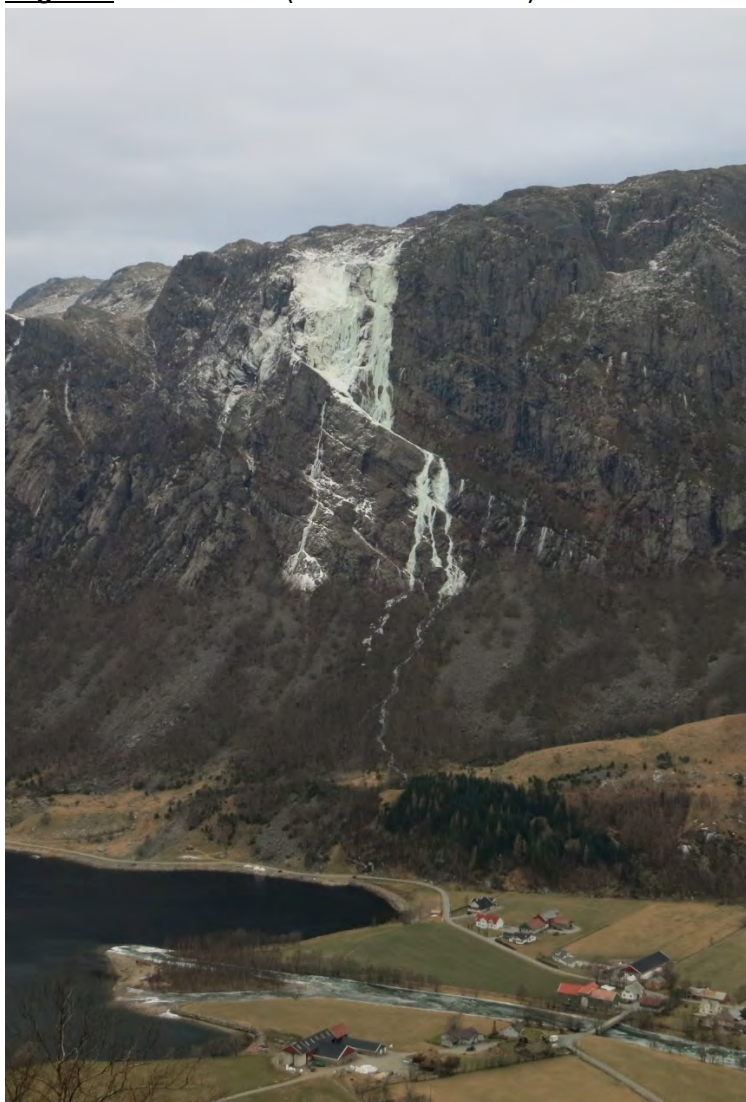
Tungebekken WI3, 350m (58.91272N, 6.28313E)

A long and scenic route. Walk off climbers left.





Migaren WI5+? 300m? (58.92018N 6.2583E)



Bjørnen Sover, WI4+, 180m (58.9404N, 6.3293E)



7.3 HJELMELAND (NOT SHOWN ON MAP)

Sendingfossen - Various lines, WI3-5, 30m (59.15132N, 6.37733E)

Cragging from the riverbed of a gorge. Lots of potential but low altitude. Rap in to the routes.



ROUTES WITH NO EXISTING INFO FOUND

Oltesvik Quarry various lines, WI4-5, R Gaches / C Jønsson, 2014
Seaside Ice, Dirdal, WI4, R Gaches / M Coutts, 2013
Too Fat to Fly, Forsand, WI5, R Gaches / D Richardson, 2013
Feeding the Rat, Forsand, WI4 / M3, D Richardson / R Gaches, 2013
Tungebekken, Øvre Espedal, WI3, R Gaches / C Jønsson, 2016
Lindelibekken, Bjerkreim, WI5, R Gaches / D Kaada / A Kaada, 2021
Sindrefossen, Bjerkreim, WI5, R Gaches / S Ski, 2021
Jesusbekken, Austrumdal, WI5, R Gaches / S Ski, 2021
Aleksanderfossen, Hunnedalen, WI3, R Gaches / C Jønsson, 2015
50:50, Hunnedalen, WI4, R Gaches / S Ski, 2017
Borderline, Hunnedalen, WI3+, C Schneider / R Gaches, 2017
Fylkesgrensen, Hunnedalen, WI3+, R Gaches / N Stevenson, 2014
Various Link Ups, Hunnedalen, WI4, R Gaches / S Ski, 2019
November-is, Hunnedalen, WI3, N Stevenson / R Gaches, 2015
Come On Ice, Hunnedalen, WI3, R Gaches / S Ski, 2018
Snail Trail, Månå, WI3+ / M3, R Gaches / D Richardson, 2017
Klubbejeina, Sirdal, WI3, R Gaches / D Richardson, 2018
Riverdance, Sirdal, WI4, D Richardson / R Gaches, 2014
Fidjelandskåret, Sirdal, WI4, R Gaches / S Haagenrud 2021
Bjørnen Sover, Vinddalen, WI4+, R Gaches / O Turtum, 2019
Sendingfossen various lines, Hjelmeland, WI3-4, R Gaches / D Richardson / N Stevenson, 2013